



Welcome to our end of term 4 newsletter!

As another term draws to a close, it is lovely to reflect on all of the exciting events which have taken place. The term started with a fantastic trip to Bewl, and despite some challenging weather, the staff and year 5 thoroughly enjoyed their adventure. Standing up and dancing in a Kayak was certainly a new experience for me! We loved seeing the children dressed up for World Thinking Day and World Book Days, well done to parents and children for the imaginative costumes! We have begun our journey with OPAL (Outdoor Play and Learning) and are very excited about the next steps. Please keep your eyes peeled for more information and requests for donations! I wish everyone a peaceful Easter Break, Mrs Baldwin, Headteacher

Attendance this term

Whole school attendance this term 95.1%

Best attendance this term:

Falcon Class 97.6% and Wagtail Class 97.4%

Whole school attendance this academic year:
94.3%



Congratulations to Mrs Hayes and her family, who welcomed the safe arrival of baby "Imogen" on Friday 8th March 2024.

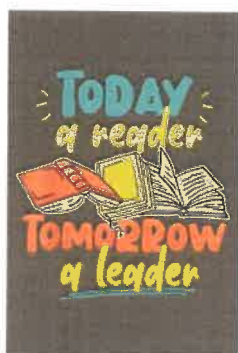
Mummy, Imogen and big brother Isaac are doing well and we look forward to seeing them at some point soon for cuddles.

Football superstars!

A huge well done to our fantastic football teams for their brilliant performances on Thursday 21st March 2024. Wouldham won the Tunbury Football Tournament and then had a narrow defeat to Delce after school. We are incredibly proud of the children's determination and excellent team skills. Huge shout out to Ezra who won an award for being a great sportsman shining a light on our school values. Staff report that the children were all well mannered and respectful, representing our school impeccably. Thank you to Louis Kennedy and MFSE for supporting the children.

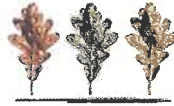


Reading, reading and more reading



Evidence shows that reading for pleasure is the single biggest indicator of a child's future success – more than their family circumstances, their parents' educational background or their income. Among the many benefits, reading is proven to reduce stress and anxiety, increase empathy and improve vocabulary. Reading is not just about decoding text, children love to escape into a good story. Reading to your child or sharing an audio book is extremely beneficial to their development. The World Book Day website has free audio books and lots of ideas and resources for families to explore! [Families - World Book Day](#)

We read with the children in school regularly but the biggest thing you can do for your child's development is to read to and with them at home! Let's all aim high for record reading success in term 5!



Mrs George Baldwin and children from year 6 and year R enjoyed planting 100 trees on the school grounds courtesy of the Royal Forestry Society. We hope this will be a lasting memory for our year 6 children and we are sure the year R pupils will enjoy growing up alongside the trees!

Term 4 in Action

Year 4 enjoyed baking biscuits in DT!



Jackdaw class have been studying the Great Barrier Reef in geography this term. We have looked at the damaging effect plastic is having on all marine life.

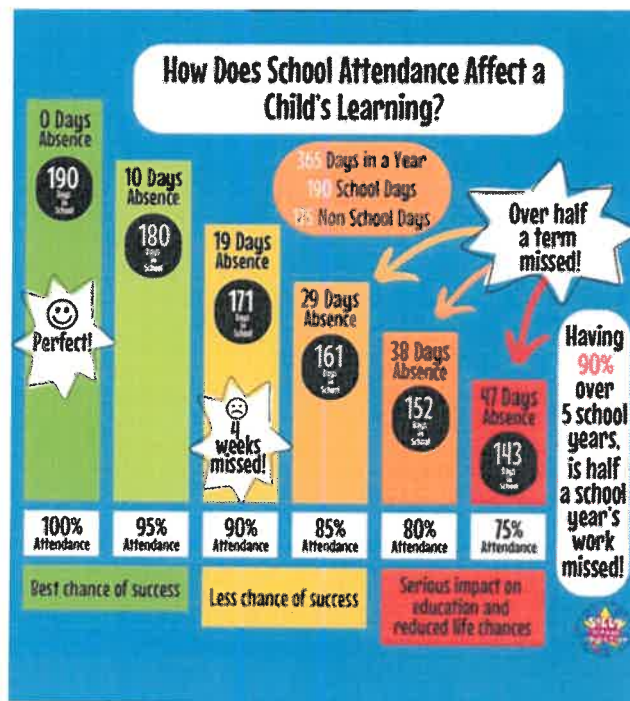
In an attempt to clean up our own environment, we went on a litter pick around the field, two bags of plastic were collected! We hope to stop more being blown into the river and then out to sea.



Uniform Update

As we move towards more active playtimes which will include playing in sand and on the muddy field, we feel this is a good time to consider our school uniform policy. Therefore, from term 5 onwards our school ties are no longer compulsory. Children may wear a white polo shirt or white shirt. We would also ask that children bring in a pair of old trainers if they are particularly keen on playing on the field or in our muddy zones!

Attendance Matters



SCHOOL TERM DATES

End of Term 4	Thursday 28th March
Term 5 starts	Tuesday 16th April
Safety In Action Year 6	Wednesday 24th April
Year 4 School Trip	Monday 22nd April and Friday 26th April
Bank Holiday	Monday 6h May
Year 6 SATs	Monday 13th May—Thursday 16th May
End of Term 4	Thursday 28th March
Term 5 starts	Monday 15th April
Rising Year R offer day	Tuesday 16th April
Year 6 Project Salus	Wednesday 24th April
Class photos	Wednesday 8th May
End of Term 5	Friday 24th May
Term 6 starts	Monday 3rd June
Bikeability	Monday 3rd June, Monday 10th June and Monday 17th June
End of 6 Term	Tuesday 23rd July

Attendance

Persistent absence

Any child with attendance of 90% or below (regardless of the reason for any absences) is considered to be a persistent absentee by the government. This equates to missing ½ a day of school every week.

Do you know what your child's attendance percentage is?

If your child is persistently absent, the school might organise a meeting to find out what could be causing the absences and what is needed to help make things better. This may result in the creation of a parenting contract or referrals to services such as Early Help and Preventative Services, who may be able to provide your family with additional support.

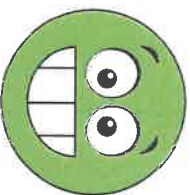
Advice for schools

The school might also contact the PRU, Inclusion & Attendance Service at Kent County Council for advice and in cases of severe or persistent absence.

All the information covered in this leaflet is available at:

www.kent.gov.uk/education-and-children/schools/school-attendance

There are 190 days in a school year, which leaves 175 days to spend on whatever you choose.



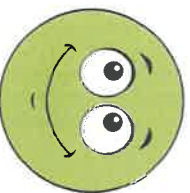
190 DAYS
100%

Very best chance
of success



179 DAYS
94%

Less chance
of success



183 DAYS
96%

Off to a
flying start



175 DAYS
92%

Harder to
make progress



MORE THAN 19 DAYS' ABSENCE
LESS THAN 90%

Persistent absence, not good for your child

*Positive
attendance
for all...*



**School Attendance:
A Guide for Parents
& Carers**

Kent County Council works closely with schools and other services to promote the regular attendance of children at school.

Your responsibility

You have a legal duty to ensure your child receives a regular education at school or otherwise, which will help give them the best possible chance of success in life.

If your child is of compulsory school age and registered at a school, but absent without good reason, the school may choose not to authorise any of those days. This could result in the council taking action against you for each child absent, including:

- A fine (fixed penalty notice)*
- Attendance Prosecution through the Magistrates' Courts which could lead to a fine of up to £1,000 or a parenting order being issued.

• An Education Supervision Order (ESO) through the Family Courts.

* Your child's school may apply for the council to issue a fixed penalty notice to you if:

- Your child goes on holiday without the headteacher's permission.
- Your child is absent or late without a suitable explanation, or none is provided.

.Each parent can receive a £120 fine for each child reduced to £60 if paid within 21 days. If the fine remains unpaid after 28 days you may be prosecuted which could result in a larger fine.

www.gov.uk/school-attendance-absence/legal-action-to-enforce-school-attendance

Attendance matters

Too ill to attend school?

Children can attend school with minor ailments (toothache, headache, stomach ache, cold, sore throat). If you are unsure how long your child should be absent with an illness, ask your child's school, GP or pharmacist for advice.

Medical appointments

All routine appointments should be booked outside school hours. If your child is absent for medical reasons, your child's school may ask to see 'medical evidence' (e.g. copy of a prescription, medicine packaging with a label or appointment card). If you are unable to provide this, the school might not authorise the absence.

Absence during term time

Your child must not be absent from school:

- For day trips / birthdays / holidays
- If weather is bad or you are running late
- To care for other family members
- Due to the illness of a parent or sibling.

The school will only authorise an absence in very exceptional circumstances, such as in the event of a family emergency.

Reporting absences

It is a parent / carer's responsibility to notify school with the reason if their child will be absent.

www.childrenscommissioner.gov.uk/back-into-school/resources-for-families/

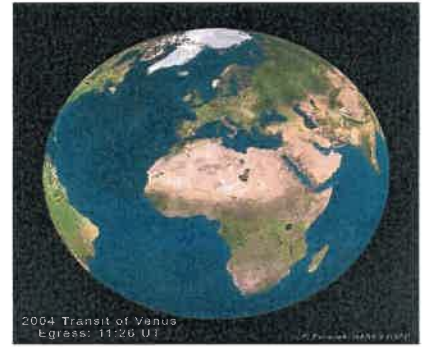
Every day counts

Punctuality

Arriving late to school is unsettling for your child and can be disruptive for their teacher and other children in the class. It is important your child arrives on time. If your child arrives late, this will be marked in the register. If your child arrives very late, this may be recorded as unauthorised absence for the whole morning. Be sure you know the times the school marks pupils as late.

Minutes late per day	Equals days-worth of teaching lost per year
5 minutes	3.4 days
10 minutes	6.9 days
15 minutes	10.3 days
20 minutes	13.8 days

EVERY MINUTE COUNTS



Earth celebration

Crafts

**Make your own
fruit kebab**

Tuesday 9th April 2024

11am start

Story

The Church in Burham (Methodist)

29 Church Street, ME1 3SB

Suitable for the whole family

Playdough

Parachute

Songs

*Free event run by the local Messy Church team
Voluntary cash donations box will be collecting
for Kent Wildlife Trust.*

*Fruit will be provided for the fruit kebabs, but
please bring a plate to share if you are able.*



FREE FAMILY FUN DAY

CHARLTON ATHLETIC FOOTBALL STADIUM
SE7 8BL

WED, APR 3RD FROM 12PM



YOU'RE INVITED!





SPECIAL TICKET DISCOUNT ON MEN'S AND WOMEN'S MATCHES IF YOU ATTEND THE FAMILY FUN DAY

GET EACH MATCH BELOW FOR JUST

£10 ADULTS

£5 CONCESSIONS



CHARLTON ATHLETIC **V**
BARNSLEY
SATURDAY, APRIL 6TH
KO 3PM



CHARLTON ATHLETIC WOMEN **V**
SOUTHAMPTON WOMEN
SUNDAY, APRIL 28TH
KO 2PM



USE THE CODE BELOW IN PERSON AT THE TICKET OFFICE
ON APRIL 3RD TO GET YOUR DISCOUNTED TICKETS!

FamilyFunDay2024

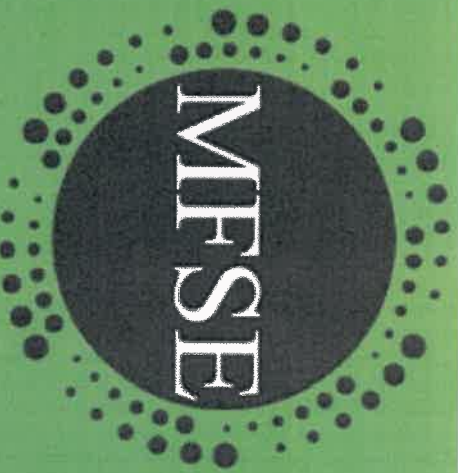


BOOK NOW

SCAN THE QR CODE
BELOW FOR THE MFSE
BOOKING LINK!

EMAIL - MFSE@MAIL.COM
PHONE - 07387 667546





MFMSE EASTER HALF TERM

OUR EASTER HALF TERM IS RUNNING FOR 9 DAYS! WITH LOTS OF DIFFERENT SPORTS, GAMES, ARTS & CRAFTS AND MANY MORE!

DATES

WEEK ONE

TUESDAY 2ND APRIL - FRIDAY 5TH APRIL

WEEK TWO

MONDAY 8TH APRIL - FRIDAY 12TH APRIL

WE WILL ALSO BE RUNNING LOTS OF A BIG EASTER GAMES AND HUNT WITH PRIZES FOR EVERYONE!



VENUES

- CREST INFANTS - ROCHESTER
- ST GEORGES - MINSTER
- BALFOUR JUNIORS - CHATHAM
- WOULDHAM ALL SAINTS

9:00AM - 15:00PM - £15
9:00AM - 16:00PM - £18
9:00AM - 17:00PM - £21
9:00AM - 18:00PM - £23
(EARLY DROP OFF AVAILABLE AT 8:00AM (NO EXTRA COST))



WEEK ONE - TUESDAY 2ND APRIL - FRIDAY 5TH APRIL / WEEK TWO - MONDAY 8TH APRIL - FRIDAY 12TH APRIL

• NAPIER PRIMARY - GILLINGHAM

9:00AM - 15:00PM - £15

(EARLY DROP OFF AVAILABLE AT 8:00AM (NO EXTRA COST))

MFSE ARE PROUD TO BE PART OF THE KENT AND MEDWAY HAF PROJECT FOR THE APRIL HALF TERM. OUR MULTI-SPORT CLUBS WILL BE RUNNING FOR 4 DAYS. THIS WILL CONSIST OF LOTS OF SPORTING ACTIVITIES SUCH AS FOOTBALL, BASKETBALL, DODGEBALL, GYMNASTICS, ROUNDERS, BENCH-BALL, TENNIS AND MANY MORE! AS WELL AS COMPETITIONS WITH LOTS OF PRIZES TO BE WON!

MULTI-SPORTS – 9:00AM TILL 3:00PM

NOT ONLY MULTI-SPORTS BUT, WE ARE DELIGHTED TO BE ABLE TO OFFER A 'FOREST SCHOOL' EXPERIENCE EVERY WEDNESDAY & THURSDAY AT CREST INFANTS IN ROCHESTER AND WOULDHAM ALL SAINTS. CHILDREN WILL NEED TO WEAR CLOTHING THAT COVERS THEIR WHOLE BODY AS WELL AS TRAINERS. THEY DO NOT MIND GETTING DIRTY OR WELTIES. FOREST SCHOOL WILL BE ON WHATEVER THE WEATHER. BELOW ARE THE TIMINGS FOR EACH YEAR GROUP.

K51 – 10:00AM TILL 12:00PM

K52 – 1:00PM TILL 3:00PM



IF YOUR CHILD HAS BENEFITS-RELATED FREE SCHOOL MEALS AND YOU LIVE IN THE KENT OR MEDWAY AREA, YOU CAN BOOK THESE CLUBS TOTALLY FREE OF CHARGE. ALL OUR STAFF ARE EXPERIENCED, AND DBS CHECKED.

CHILDREN WILL HAVE A GREAT TIME MAKING NEW FRIENDS, KEEPING ACTIVE AND DEVELOPING NEW SKILLS AS WELL AS ENJOYING A TASTY HOT LUNCH!



MFSE

WE ARE DELIGHTED TO ANNOUNCE FOREST SCHOOL IS BACK IN FOREST SCHOOL THERE WILL BE LOTS OF DIFFERENT ACTIVITIES SUCH AS BUILDING DENS, CLIMBING TREES AND MANY MORE! OUR FOREST SCHOOL WILL BE LED BY OUR FOREST SCHOOL LEADERS. ANYONE WHO BOOKS ONTO OUR HOLIDAY CLUB WILL BE ABLE TO ATTEND OUR FOREST SCHOOL AT NO EXTRA COST.

CHILDREN WILL BE REQUIRED TO BRING CLOTHING WHICH COVERS THEIR WHOLE BODY AND WELLIES. IF POSSIBLE, IF NOT THEN SOME TRAINERS YOU DO NOT MIND GETTING DIRTY FOREST SCHOOL WILL BE ON IN ALL WEATHERS. PLEASE NOTE THAT INAPPROPRIATE FOOTWEAR WOULD MEAN YOUR CHILD/CHILDREN WOULD NOT BE ABLE TO JOIN IN FOREST SCHOOL FOR SAFETY REASONS.

EVERY WEDNESDAY & THURSDAY DURING OUR HOLIDAY CLUB

KS1 – 10:00AM TILL 12:00PM

KS2 – 1:00PM TILL 3:00PM

FOREST SCHOOL VENUES

CREST INFANTS IN ROCHESTER
WOLDHAM ALL SAINTS